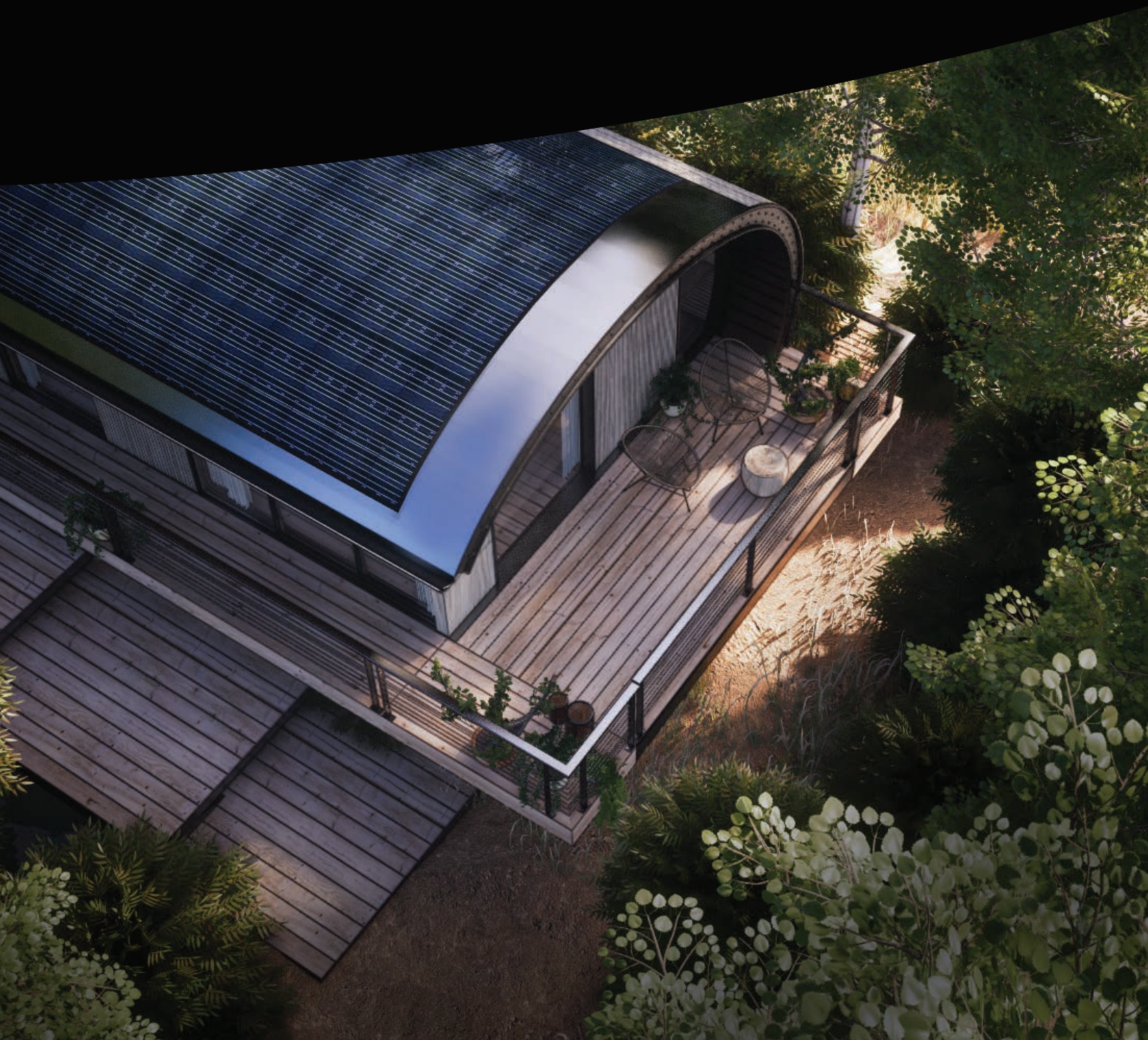


issho

LOOP



Contents

Loop Overview	4
What is Loop?	4
Breaking Boundaries: What Sets Us Apart	6
About Loop.....	7
A Case for Regenerative, Resilient Homes.....	7
Our Design Philosophy: Biomimicry Inspired	8
Climate Resistance Designs.....	8
Modules.....	12
Chassis	14
Entryway Module	16
Kitchen Module	18
Expanded Kitchen Module	20
Dining Module.....	22
Living Module	24
Primary Suite Module.....	26
Dual Primary Suite Module	28
Secondary Suite Module	30
45° Controlled Bridge Module	32
Straight Open Bridge Module	34
45° Open Bridge Module	35
Module Configurations	36
Studio Module Configuration.....	37
Three Module Configuration.....	38
Three Module Configuration Rendering.....	40
Four Module Configuration.....	42

Four Module Configuration Rendering.....	44
Five Module + Bridge Configuration.....	46
Five Module + Bridge Configuration Rendering	48
Home Systems	50
Equipment.....	50
Furnishings.....	54
Plumbing.....	56
Heating, Ventilating and Air-Conditioning (HVAC).....	60
Electrical Generation and Storage.....	61
Design Your Loop.....	66
Customization Options	66
Before You Order	68
Purchasing Land for your Loop.....	68
Determining the Size of Your Home.....	68
Permitting Determining Who Needs to Approve Building Plans	69
Financing	69
Order Your Loop.....	70
Email our Customer Journey Lead.....	70
Complete New Client Loop Request Form.....	70
Schedule a Discovery Call	70
Delivery and Installation.....	71

Loop Overview

What is Loop?

Imagine - Living in harmony with nature, growing your own food, creating your own energy, and recharging yourself, your family, and our planet all from the comfort of from home. This is the life that Loop offers.

Loop is where sustainability and self-sufficiency seamlessly intertwine. Every system, every material, every finite detail has been intentionally selected and is rooted in the deep understanding of our interconnectedness with the environment. From the moment you wake up to the minute you lay your head down at night, the home is designed to bring ease and peace to every aspect of your day-to-day life.

Living a regenerative lifestyle in an off-grid home is about more than just sustainability—it's about embracing a way of life that honors the natural world and nurtures a deep sense of connection to it. It's a journey of self-discovery and transformation, guided by the principle that by giving back to the earth, we can create a brighter, more sustainable future for all.



Exterior Rendering



Living Room + Kitchen Rendering

Breaking Boundaries: What Sets Us Apart



About Loop

Loop is an out-of-the-box, all-electric, grid-compatible, resilient, and autonomous home that comes standard with features such as renewable energy capture and storage, potable water creation and storage, indoor vertical gardens, and waste management systems.

The unique curved roofline has been designed to maximize solar efficiency, shed and collect water, optimize air circulation, and provide over 10' of indoor ceiling height. All exterior and interior wood trim is either waste-diverted, repurposed and chemical-free pressure treated wood or sustainable, VOC-free, and carbon-negative hempwood.

Floor-to-ceiling windows in all Loop models provide panoramic views, fill the home with natural light, provide passive solar gains, and create connection to the natural world outdoors. Loop also boasts recycled material countertops, high-end and efficient appliances, built-in cabinets, voice-activated faucets, and is DarkSky Approved.

Loop's individual modules average 207 sq. ft., excluding outside storage and decks, and are joined together to create buildings as small as 207 sq. ft. and up to any size you require. Loop can be custom configured in a straight line or in angled and circular footprints.

A Case for Regenerative, Resilient Homes

The way we build and inhabit our homes has a profound impact on the environment and our well-being. Traditional housing is often designed without consideration for nature. However, a new vision for regenerative housing has emerged, one that seeks to create spaces that not only shelter families but also nurture people and the planet.

Our regenerative homes are guided by key principles, including the ability for a home to not only nurture and heal its inhabitants, but also the land it sits upon. In issho's case, this means a home built to create an abundance of water, oxygen, food, energy, and even recycling waste, rather than extracting from local ecosystems.

Our Design Philosophy: Biomimicry Inspired

The word biophilia embraces the idea that people have an innate tendency to look for connections with nature and other forms of life. Biophilic design aims to enhance well-being and overall satisfaction by integrating natural elements such as plants, light, water features and views of nature into buildings and spaces.

Throughout the Loop homes, we have been incredibly intentional about the integration of the natural world. For example, our regenerative homes not only collect rainwater where permitted, but also use advanced technologies and techniques to create water by mimicking how plants and trees capture and store water.

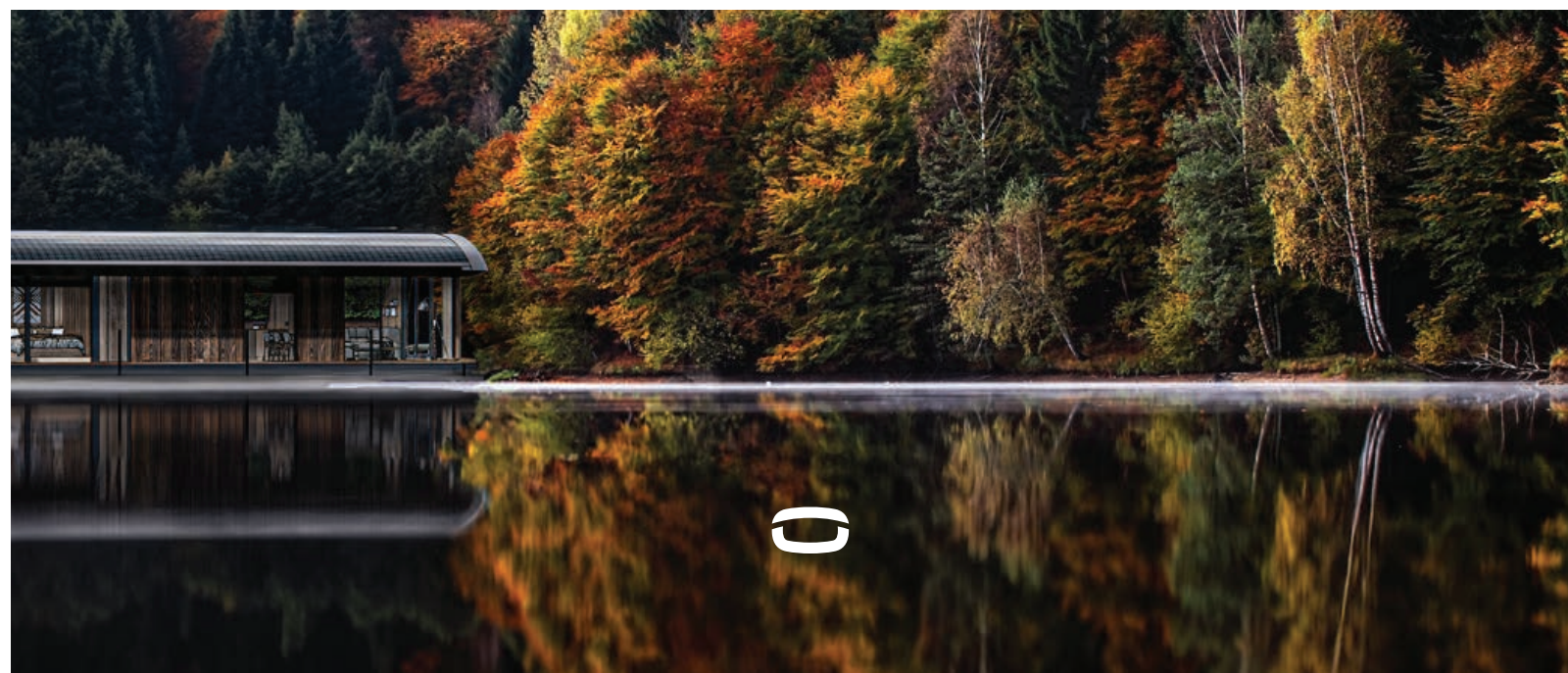
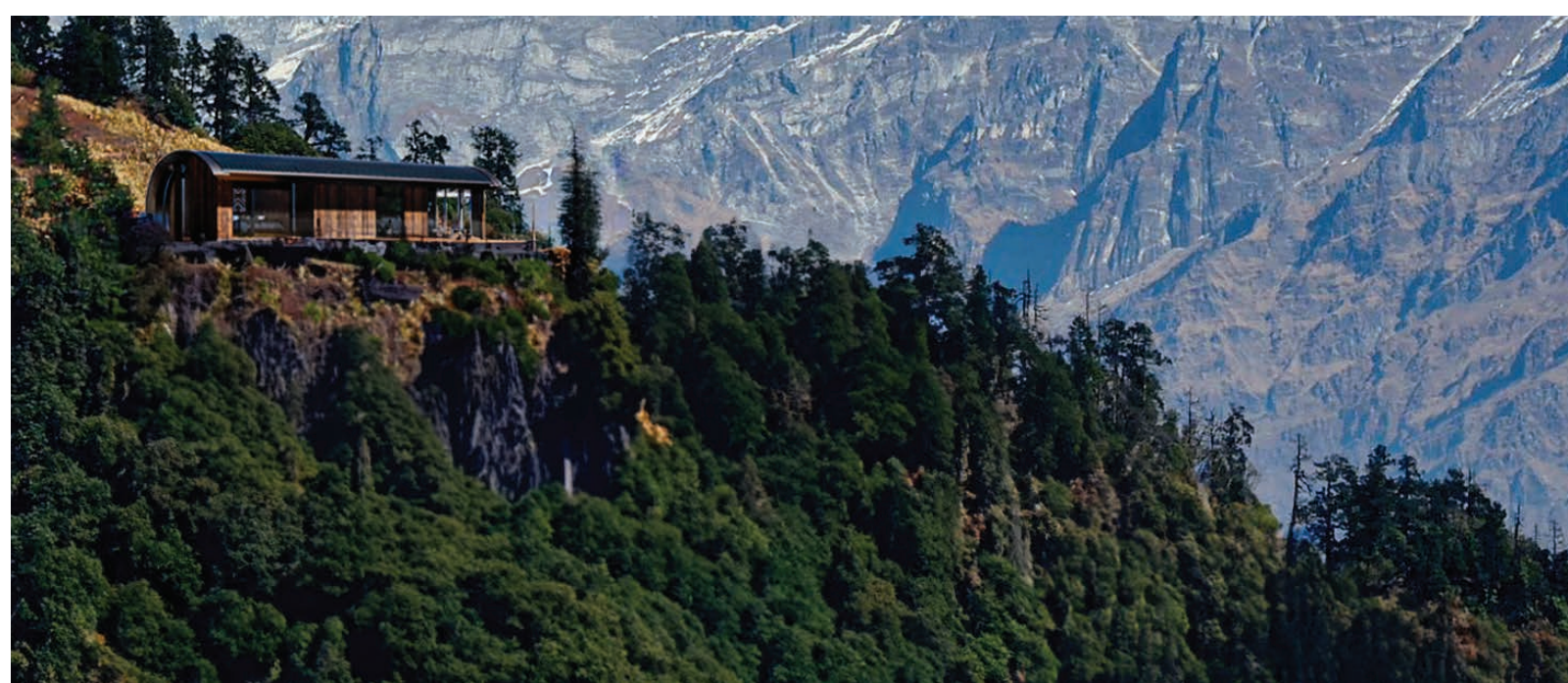
Regenerative housing is designed to work in harmony with nature, not against it. This means using natural, waste-diverted and sustainable materials, designing for nature-integrated spaces, and creating buildings that take into account the local climate, topography, and ecology.

Climate Resistance Designs

With ever changing weather patterns and extreme weather occurrences, a home once thought to have been placed in a stable, secure location, can be at risk of complete destruction with little-to-no heads up. Our team has taken extreme weather instances into consideration during our design process.

The modular nature of our homes allows for post install scalability and relocation. For example, should a hillside be eroding or water levels rising, you have the ability to move your home from the original footings it was placed upon. Loop has also been engineered to withstand harsh weather conditions such as hail, hurricanes, earthquakes, and wild-fires.

Our homes are made to endure and to be multi-generational so you, your children, and your grandchildren can enjoy them for years to come.





Modules

Loop is a modular home with various configurations that can be mixed and matched to create the perfect space for you.

There are eleven different modules to the Loop homes system, consisting of living, sleeping, cooking, dining, entertaining, and storage spaces. They can be connected with different bridge modules including either open-air (completely outside) or a hybrid, controlled-environment (indoor + outside).

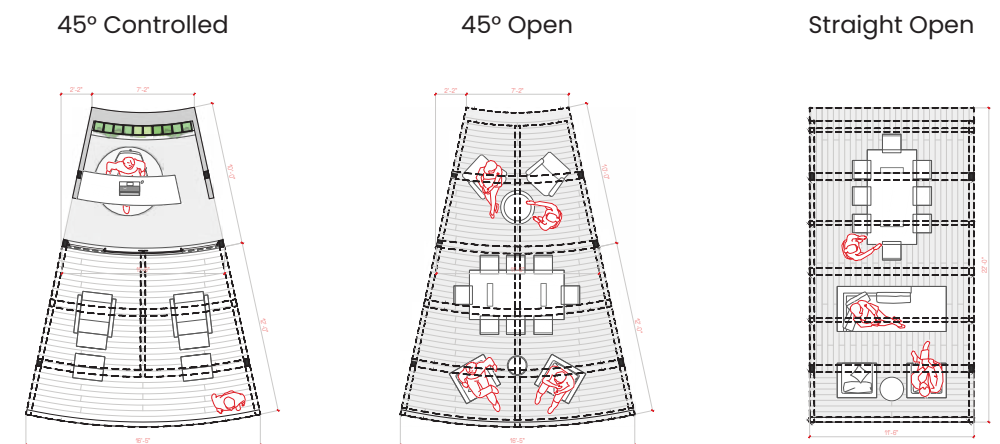


Bedroom Rendering

INTERIOR MODULES



BRIDGE MODULES

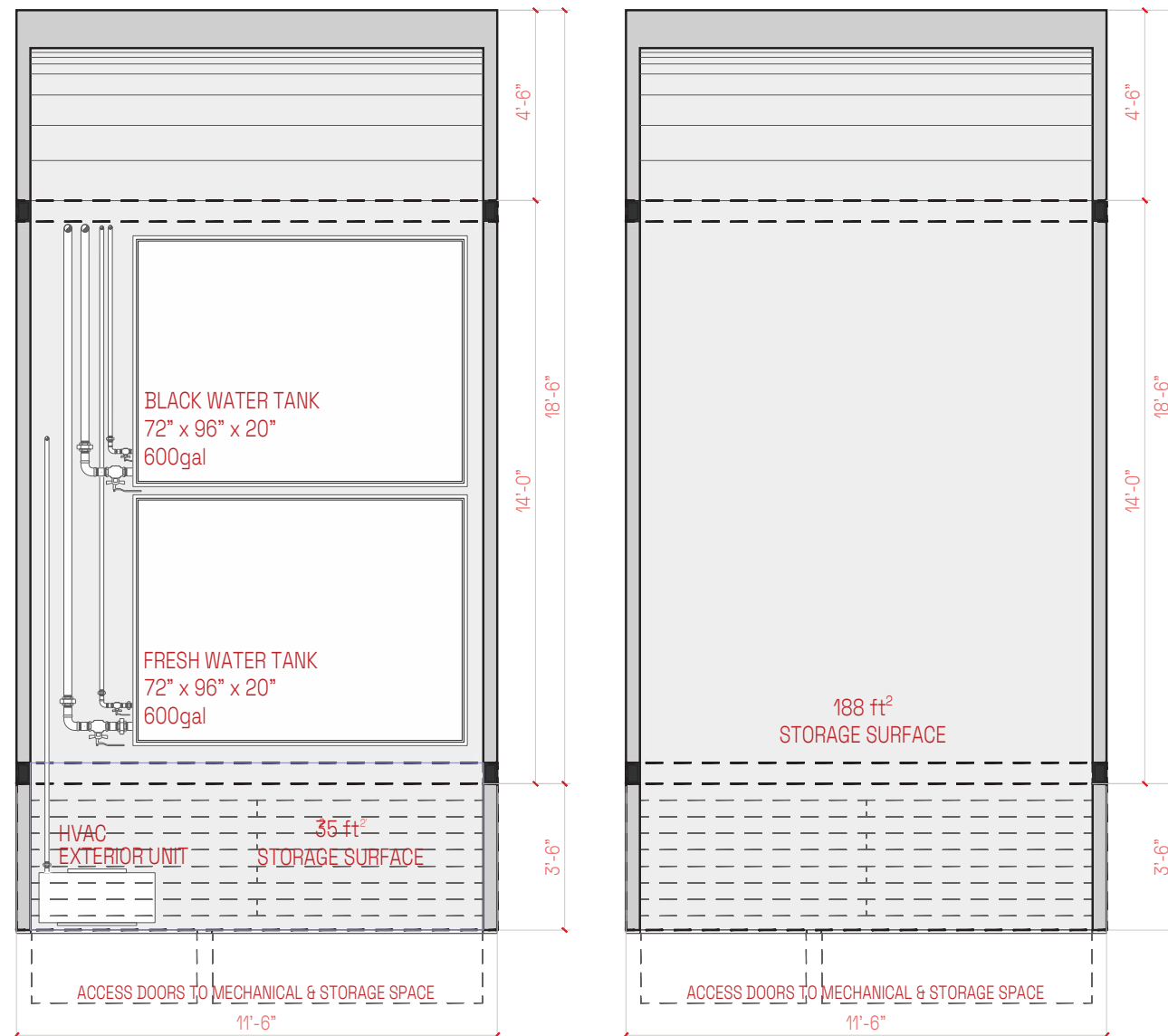


LOOP

Chassis

The chassis is the area beneath the living quarters in each module. Each chassis houses mechanical, plumbing, and electrical components needed for its respective module. In addition to these technical components, the chassis also is designed for storage of personal belongings.

The mechanical chassis serves as the nerve center for the various systems that control and maintain the comfort, safety, and functionality of Loop. It's been designed to facilitate regular inspection, maintenance, and occasional upgrades to ensure optimal performance and efficiency.



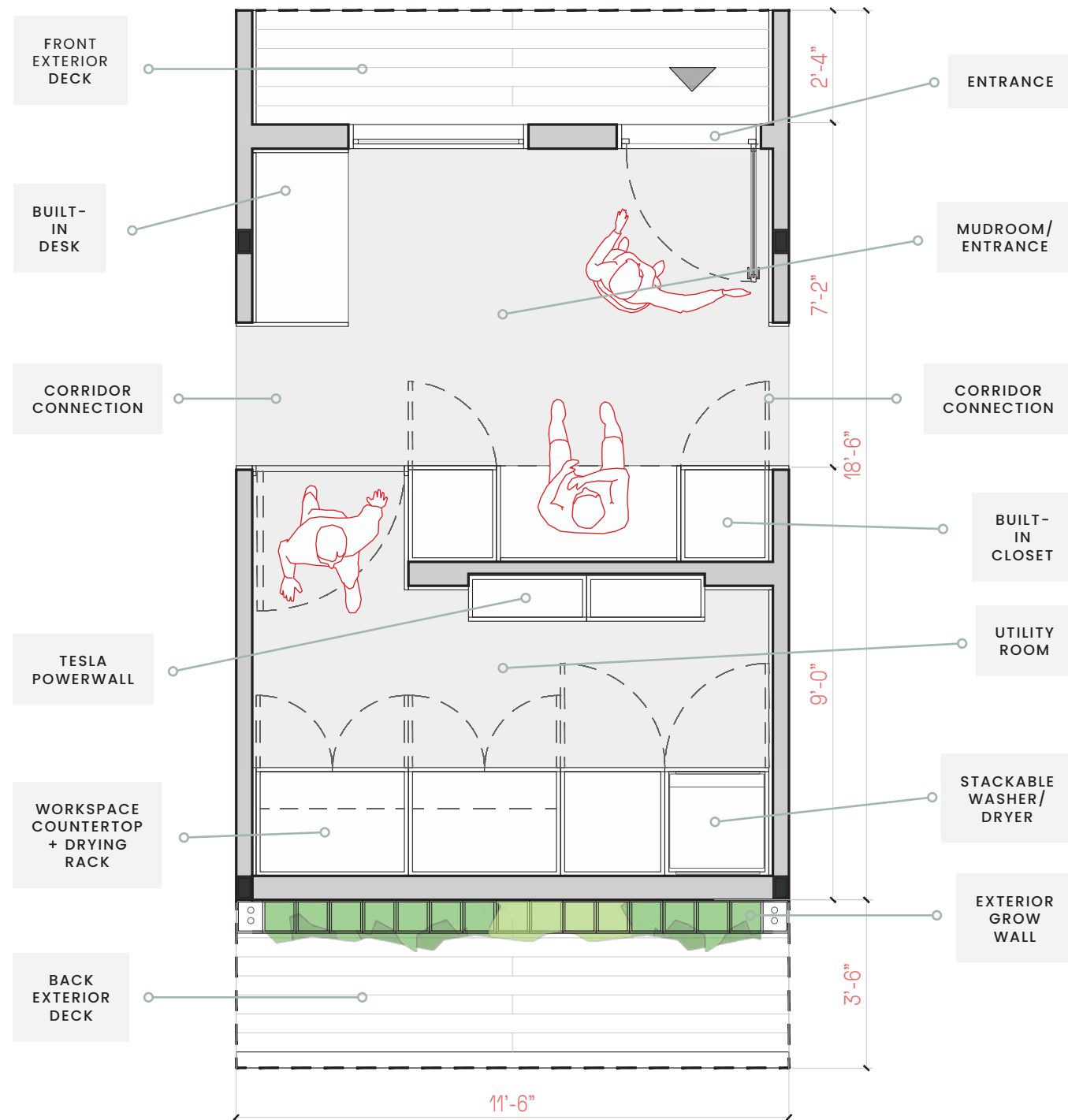
CHASSIS MODULE RENDERINGS



LOOP

Entryway Module

Total Built Surface: 253 sq. ft.



ENTRYWAY MODULE SPECIFICATIONS

Exterior Deck

- 68 sq. ft.
- Dwelling entry
- 11' x 8' Exterior vertical grow wall

Mudroom/Entrance

- 117 sq. ft.
- Built-in closet: two coat closets + bench and cubbies + shoe shelves + luggage storage.
- Built-in desk + book shelves + general storage.
- Corridor: double connection to modules.

Utility Room

- 90 sq. ft.
- Built-in closet: BOSCH Washer/Dryer + cleaning supplies + general storage cabinets and shelves
- Workspace countertop + drying rack.
- Tesla Powerwall 3

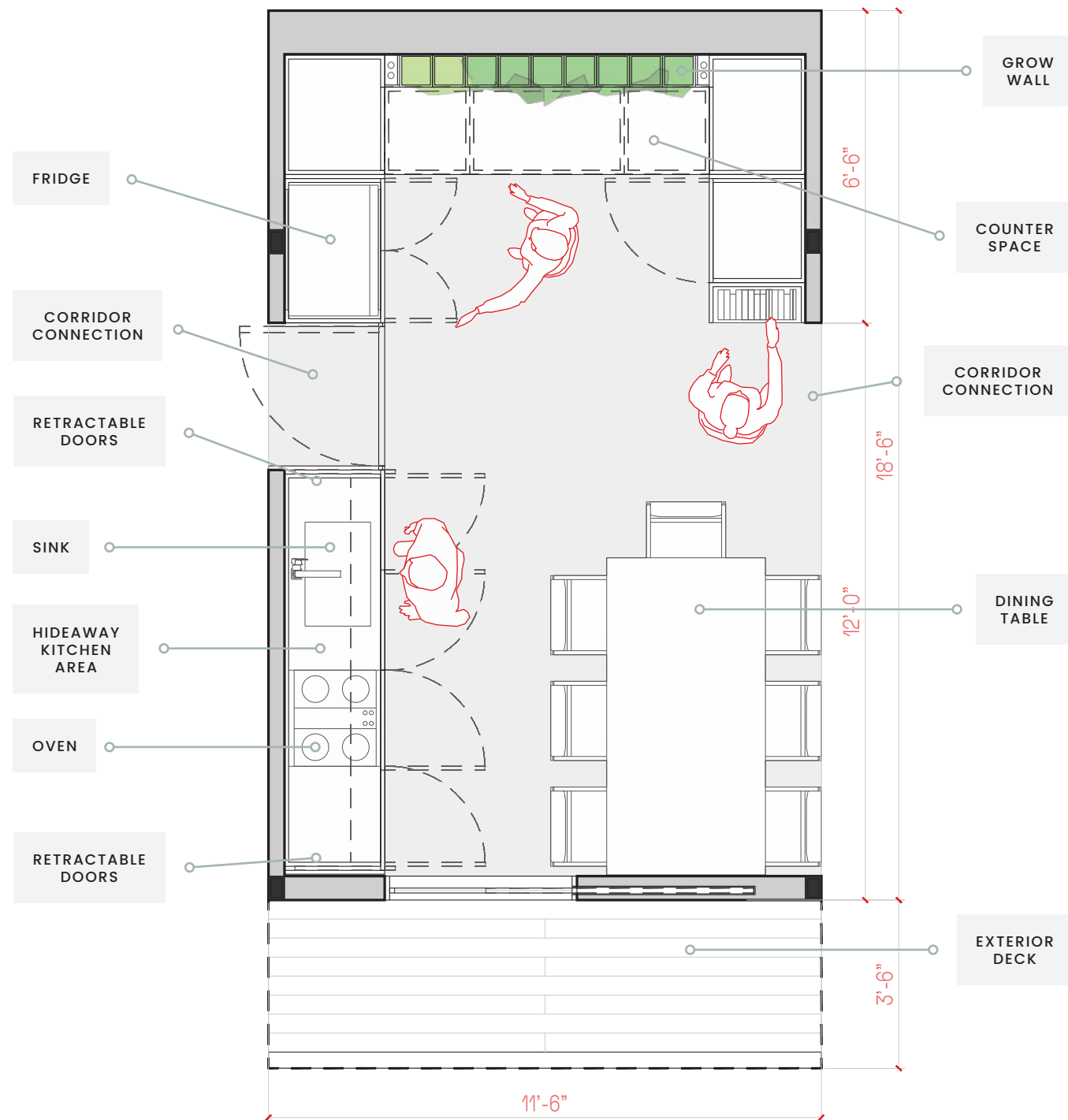
Mechanical Chassis

- MEP + stainless steel black water tank (96" x 96" x 20" - 800gal)
- Grow wall water tank (96" x 12" x 12" - 60gal)



LOOP
Kitchen Module

Total Built Surface: 253 sq. ft.



KITCHEN MODULE SPECIFICATIONS

Exterior Deck

- 40 sq. ft.

Kitchen

- 213 sq. ft.
- Built-in closet w/ retractable doors, hidden kitchen counter, upper and lower cabinet storage, food storage
- BOSCH appliances (oven, cooktop, dishwasher, hood)
- Kitchen access door and connection to Entrance Module
- BOSCH 36" paneled refrigerator
- BOSCH Gen 2 Climate 5000 Mini Split
- 8' x 3'-6" table (8 people)

Mechanical Chassis

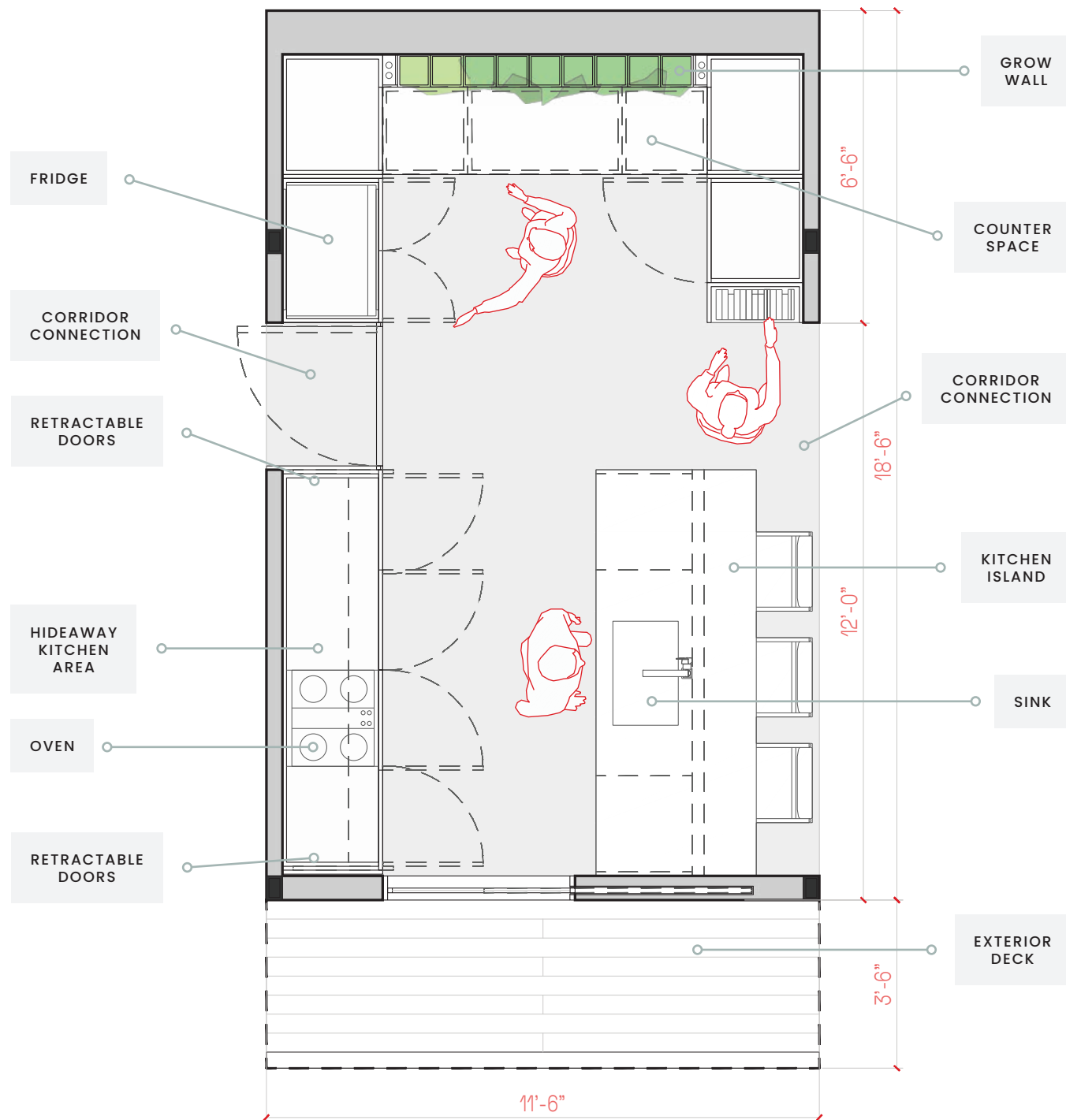
- 160 sq. ft.
- MEP + stainless steel fresh water tank (72" x 96" x 20" - 600gal)



LOOP

Expanded Kitchen Module

Total Built Surface: 253 sq. ft.



EXPANDED KITCHEN MODULE SPECIFICATIONS

Exterior Deck

- 40 sq. ft.

Kitchen

- 213 sq. ft.
- Built-in closet w/ retractable doors, hidden kitchen counter, upper and lower cabinet storage, food storage
- BOSCH appliances (oven, cooktop, dishwasher, hood)
- Kitchen access door and connection to Entrance Module
- BOSCH 36" paneled refrigerator
- BOSCH Gen 2 Climate 5000 Mini Split
- 8' x 3'-6" table (8 people)
- Expanded kitchen module includes a kitchen island with extra kitchen and food storage + kitchen stools

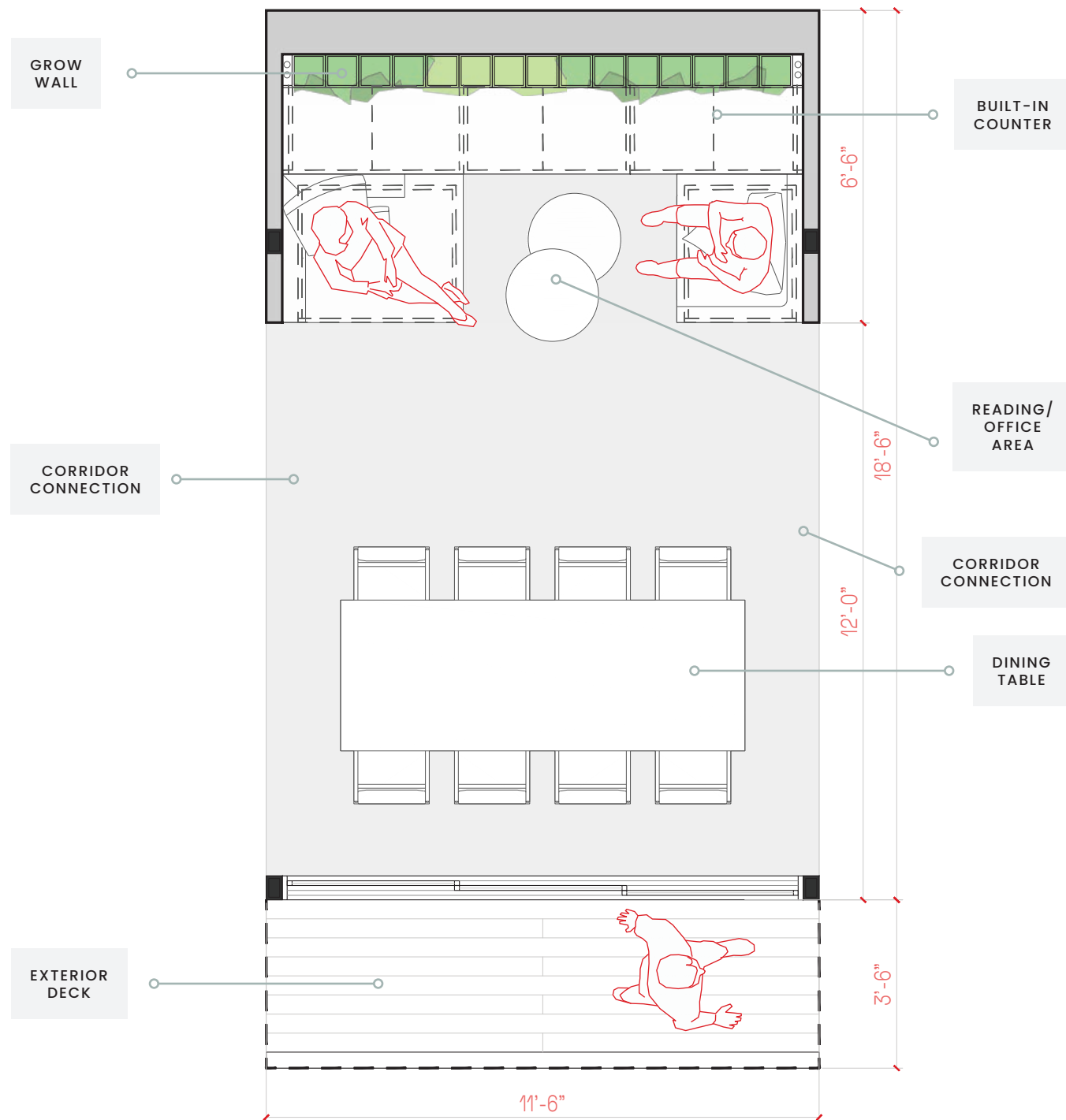
Mechanical Chassis

- 160 sq. ft.
- MEP + stainless steel fresh water tank (72" x 96" x 20" - 600gal)



LOOP
Dining Module

Total Built Surface: 253 sq. ft.



DINING MODULE SPECIFICATIONS

Exterior Deck

- 40 sq. ft.

Open Space

- 213 sq. ft.
- Built-in counter: 10'-6" x 2'-6" x 3' general storage cabinets
- Grow wall water tank (96" x 12" x 12" - 60gal)
- Hydroponic Growing System
- Reading area / office
- 10' x 4'-6" table (10 people)

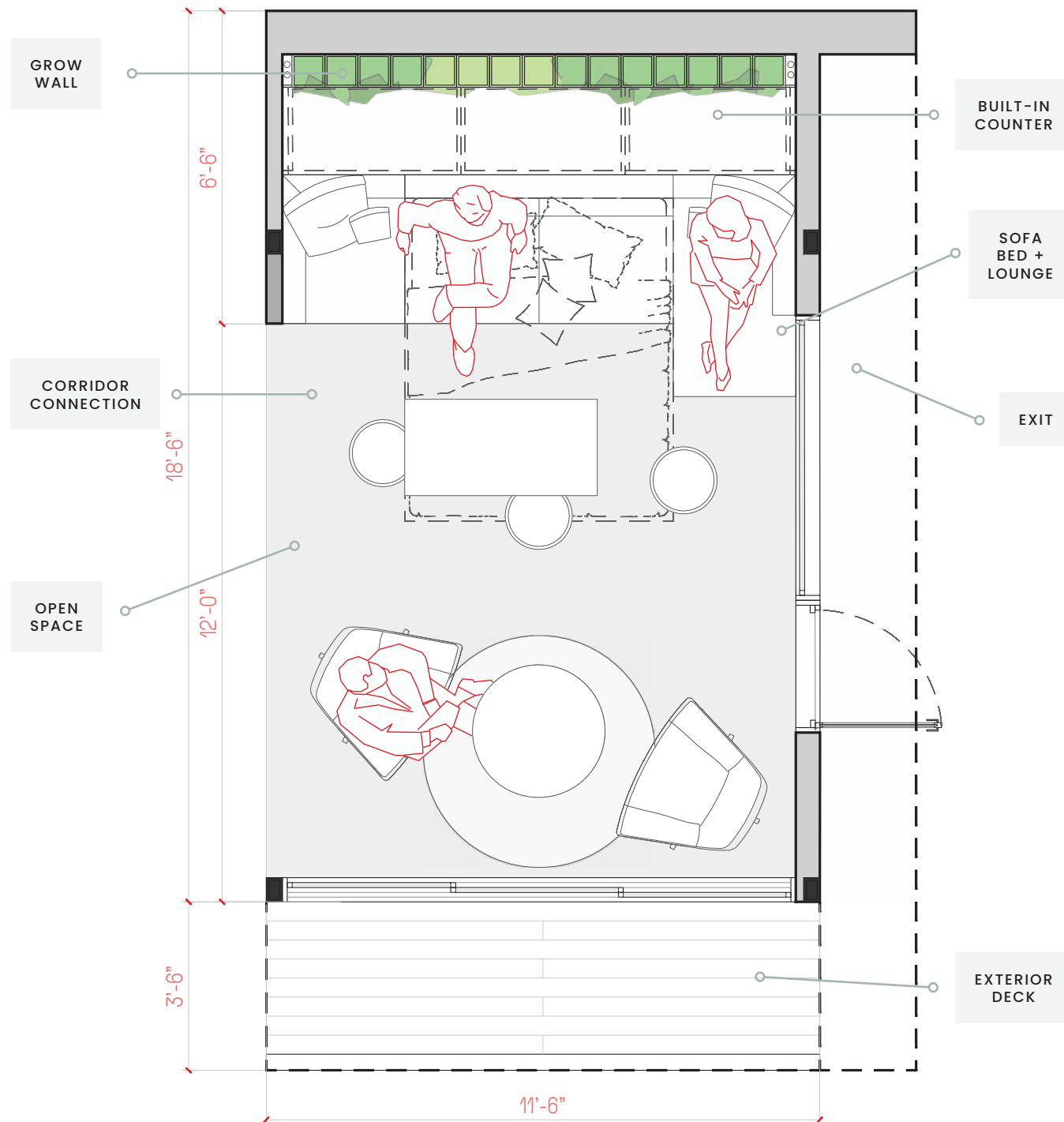
Storage Chassis

- 160 sq. ft.
- 4,800 cubic feet for general storage



LOOP Living Module

Total Built Surface: 253 sq. ft.



LIVING MODULE SPECIFICATIONS

Exterior Deck

- 40 sq. ft.

Open Space

- 213 sq. ft.
 - Built-in counter: 10'-6" x 2'-6" x 3' general storage cabinets
 - Grow wall water tank (96" x 12" x 12" - 60gal)
 - Four seat sofa-bed with chaise longue.
 - Coffee table, stools, two armchairs, and round table
- *Furniture is an optional add-on*

Storage Chassis

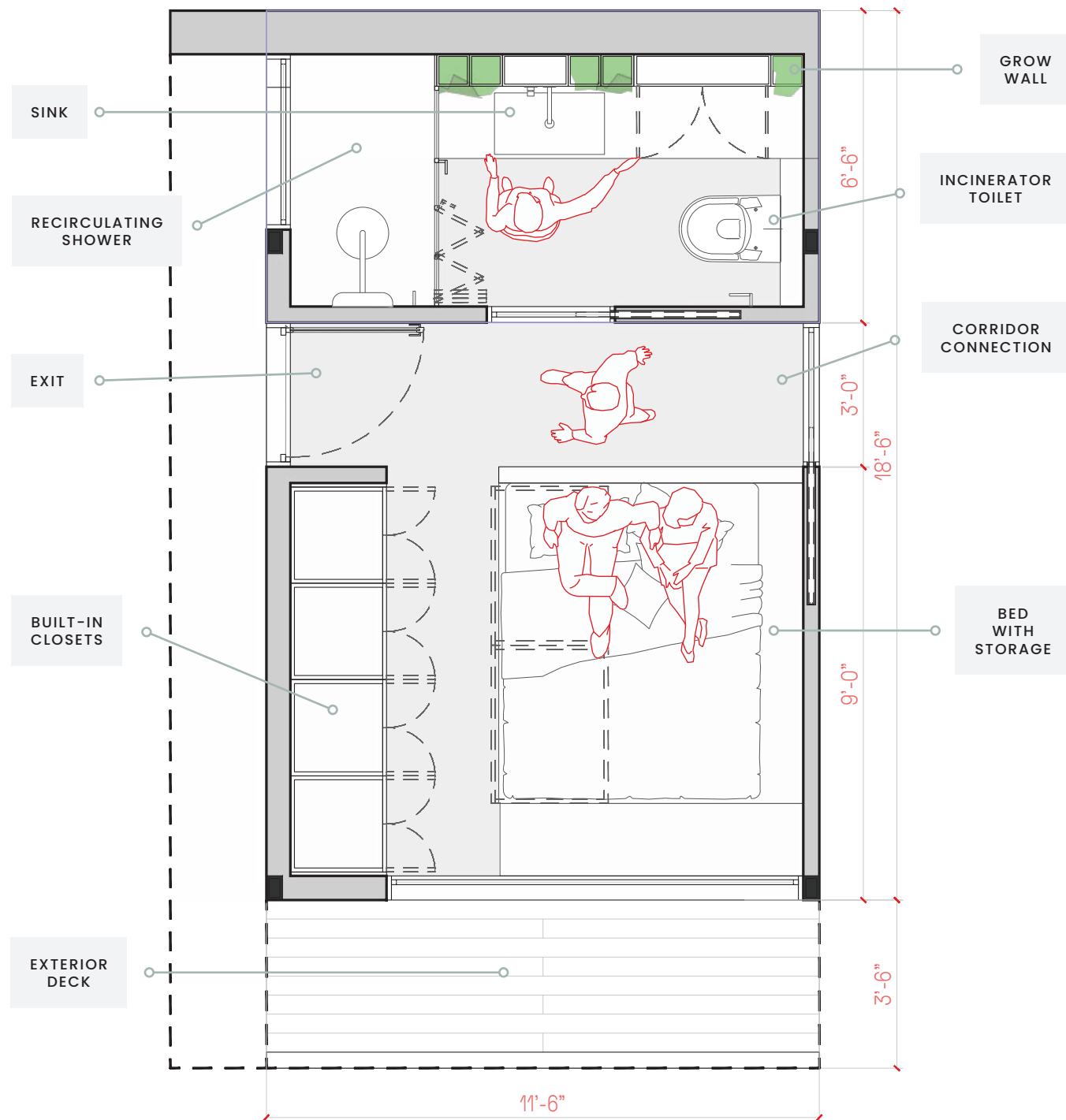
- 160 sq. ft.
- 4,800 cubic feet for general storage



LOOP

Primary Suite Module

Total Built Surface: 253 sq. ft.



PRIMARY SUITE MODULE SPECIFICATIONS

EXTERIOR DECK

- 40 sq. ft.

BEDROOM

- 75 sq. ft.
- Built-in closets: two 4' x 2' x 8' wardrobes
- BOSCH Bosch Gen 2 Climate 5000 Mini Split.
- Built-in bed: queen/king size bed + 3'-3" x 3' x 1'-2" storage drawers
- Headboard includes bed lights and outlets

BATHROOM

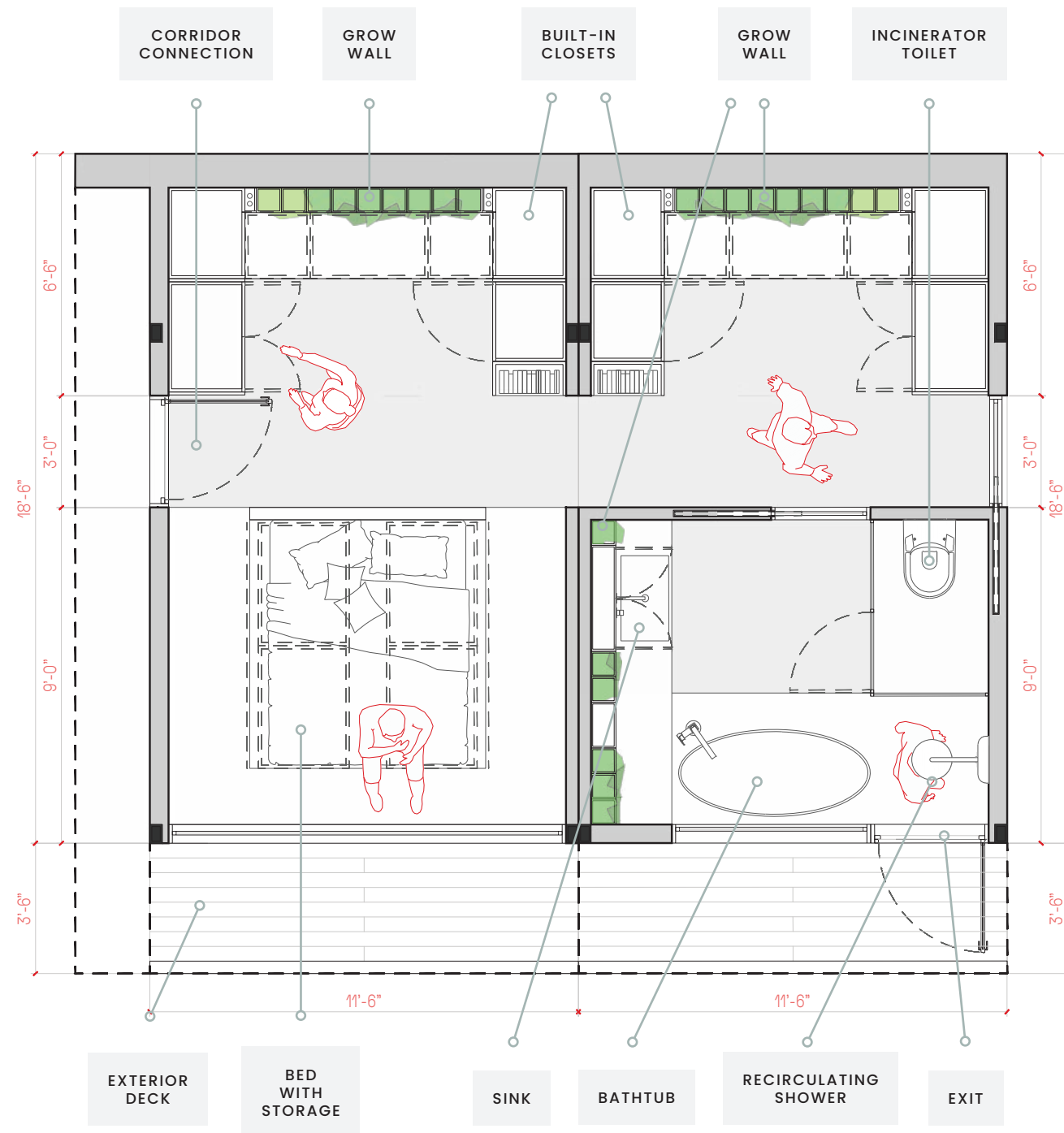
- Bath vanity: 7'-2" x 2'-6" x 3' built-in bathroom storage cabinets + sink + towel bar +
- Grow wall water tank (96" x 12" x 12" - 60gal)
- Upper cabinet + grow wall
- Shower: 3'-6" x 5'-3" shower tray with Rainstick recirculating shower
- Incinerator toilet
- Bathroom mirror, two robe hooks, and tissue holder



LOOP

Dual Primary Suite Module

Total Built Surface: 253 sq. ft.



PRIMARY SUITE DUAL MODULE SPECIFICATIONS

EXTERIOR DECK

- 80 sq. ft.

BEDROOM

- 10'-8" x 5'-6"
- 10'-8" x 5'-6" Built-in Closets
- BOSCH Bosch Gen 2 Climate 5000 Mini Split
- Built-in bed: queen/king size bed + 3'-3" x 3' x 1'-2" storage drawers
- Built-in Master Closets
- Headboard includes bed lights and outlets

BATHROOM

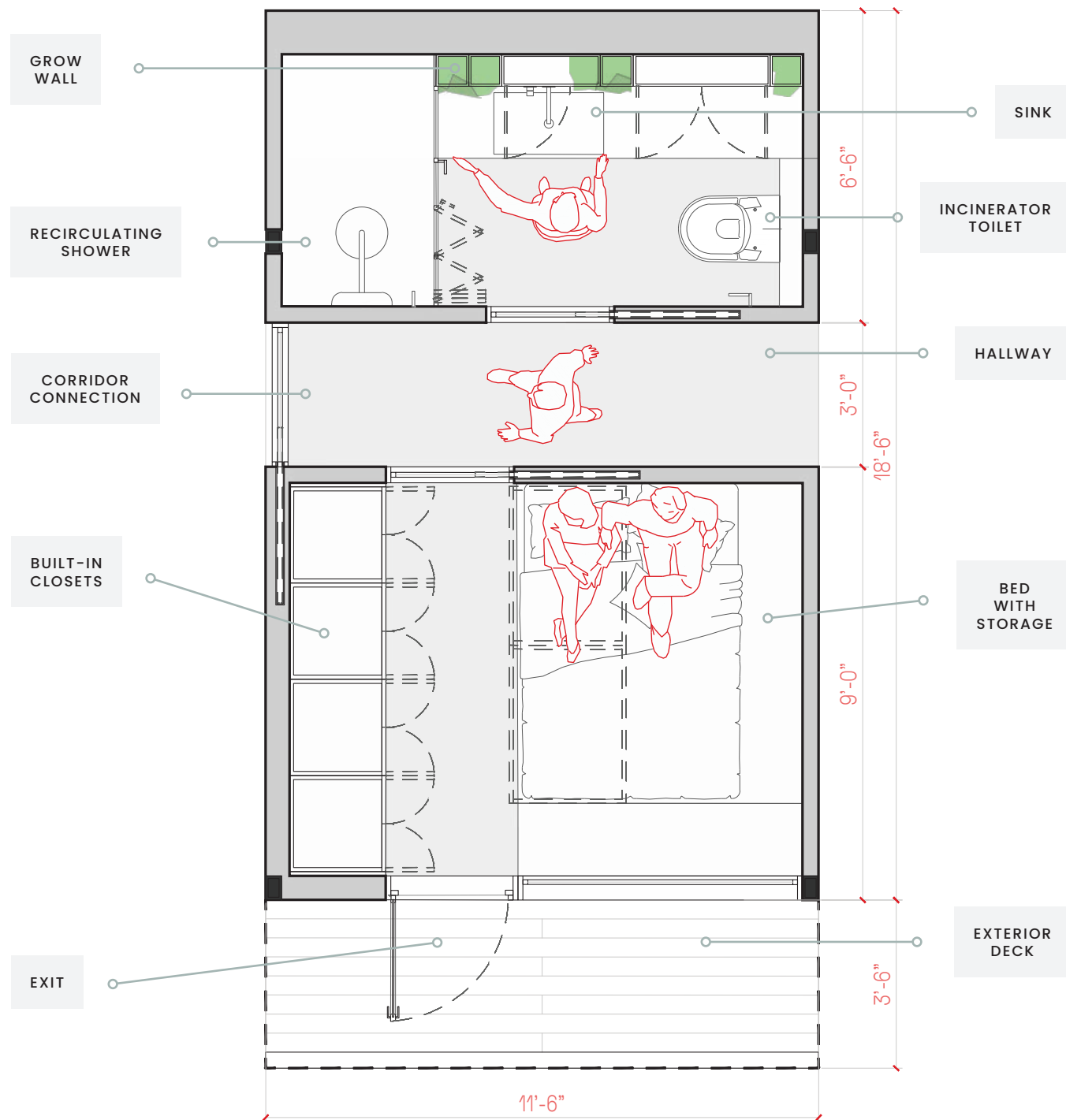
- 103.5SQ FT
- Bath vanity: 7'-2" x 2'-6" x 3' built-in bathroom storage cabinets + sink + towel bar +
- Grow wall water tank (96" x 12" x 12" - 60gal)
- Upper cabinet + grow wall
- Shower: 3'-6" x 5'-3" shower tray with Rainstick recirculating shower
- Incinerator toilet
- Bathroom mirror, two robe hooks, and tissue holder
- Optional Bathtub



LOOP

Secondary Suite Module

Total Built Surface: 253 sq. ft.



SECONDARY SUITE MODULE SPECIFICATIONS

EXTERIOR DECK

- 40 sq. ft.

BEDROOM

- 75 sq. ft.
- Built-in closets: two 4' x 2' x 8' wardrobes
- BOSCH Gen 2 Climate 5000 Mini Split.
- Built-in bed: queen/king size bed + 3'-3" x 3'-0" x 1'-2" storage drawers
- Headboard includes bed lights and outlets
- Access to exterior deck from bedroom

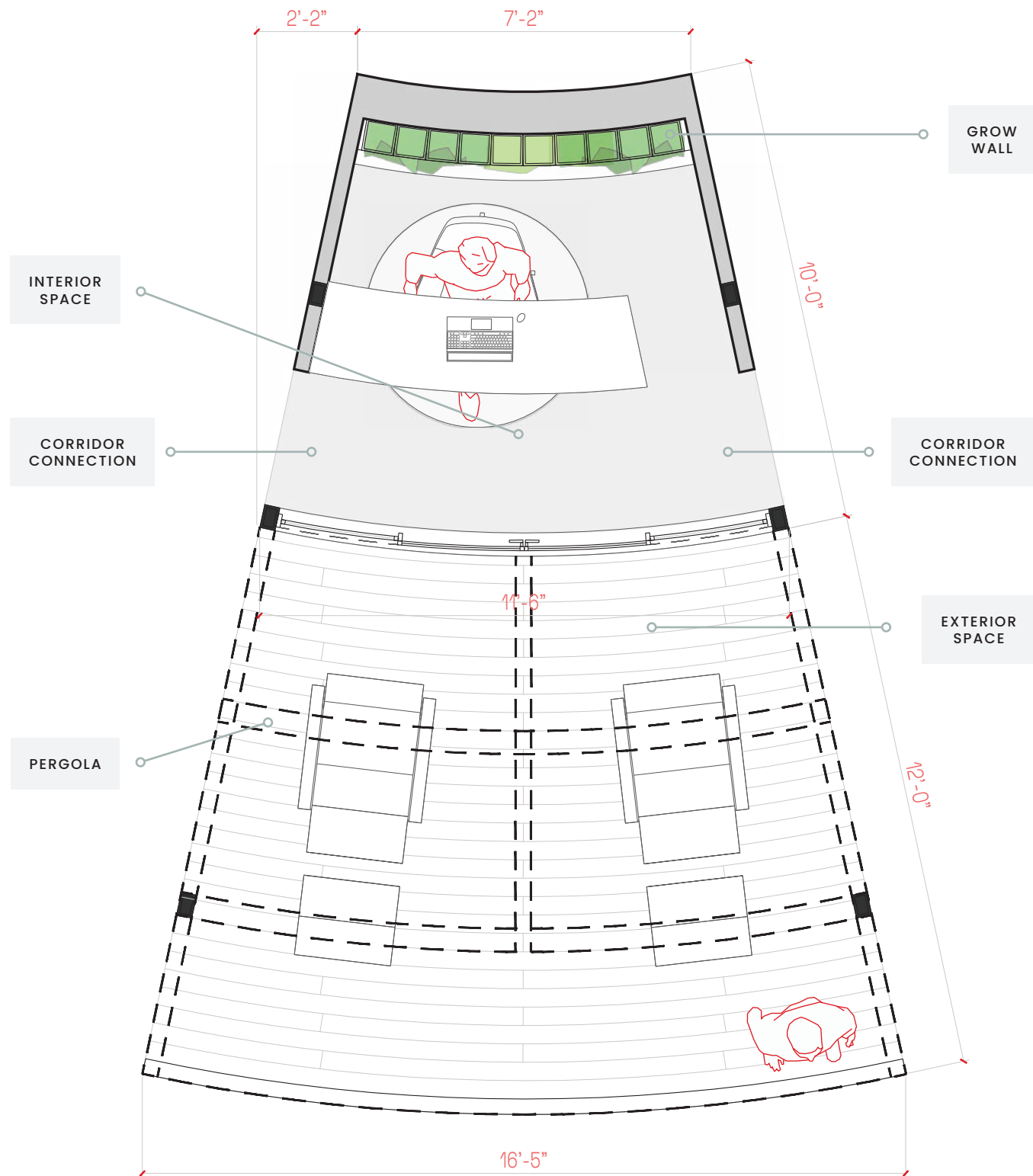
BATHROOM

- Bath vanity: 7'-2" x 2'-6" x 3' built-in bathroom storage cabinets + sink + towel bar
- Grow wall water tank (96" x 12" x 12" - 60gal)
- Upper cabinet + grow wall
- Shower: 3'-6" x 5'-3" shower tray with Rainstick recirculating shower
- Incinerator toilet
- Bathroom mirror, two robe hooks, and tissue holder



LOOP
45° Controlled Bridge Module

Total Built Surface: 92 sq. ft. + deck



BRIDGE ONE MODULE SPECIFICATIONS

EXTERIOR DECK + PERGOLA

- 168 sq. ft.

Open Space

- 92 sq. ft.
- Hydroponic Growing System + Grow wall water tank (96" x 12" x 12" - 60gal)
- Reading area / office

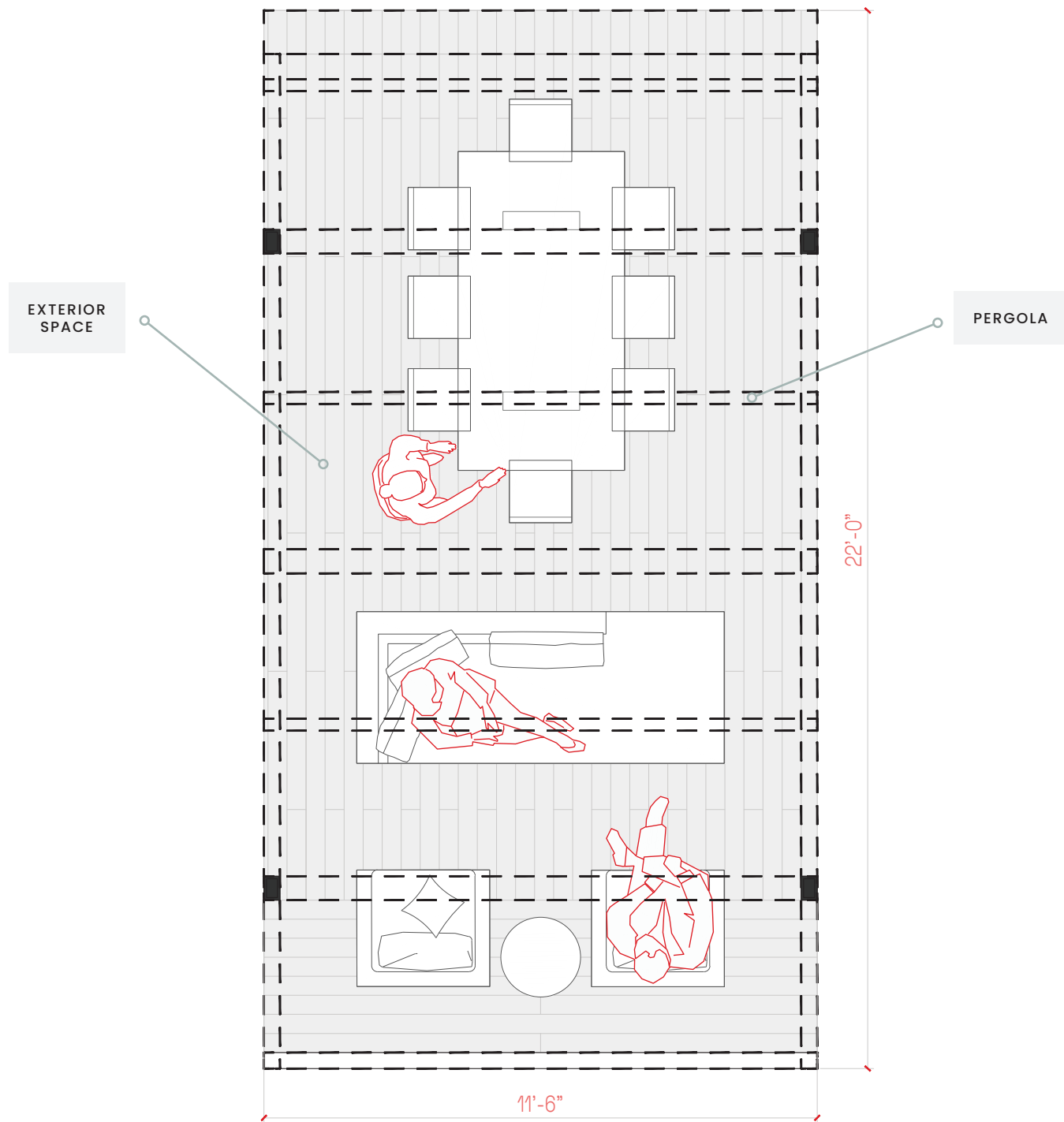
Storage Chassis

- 2,800 cubic feet for general storage



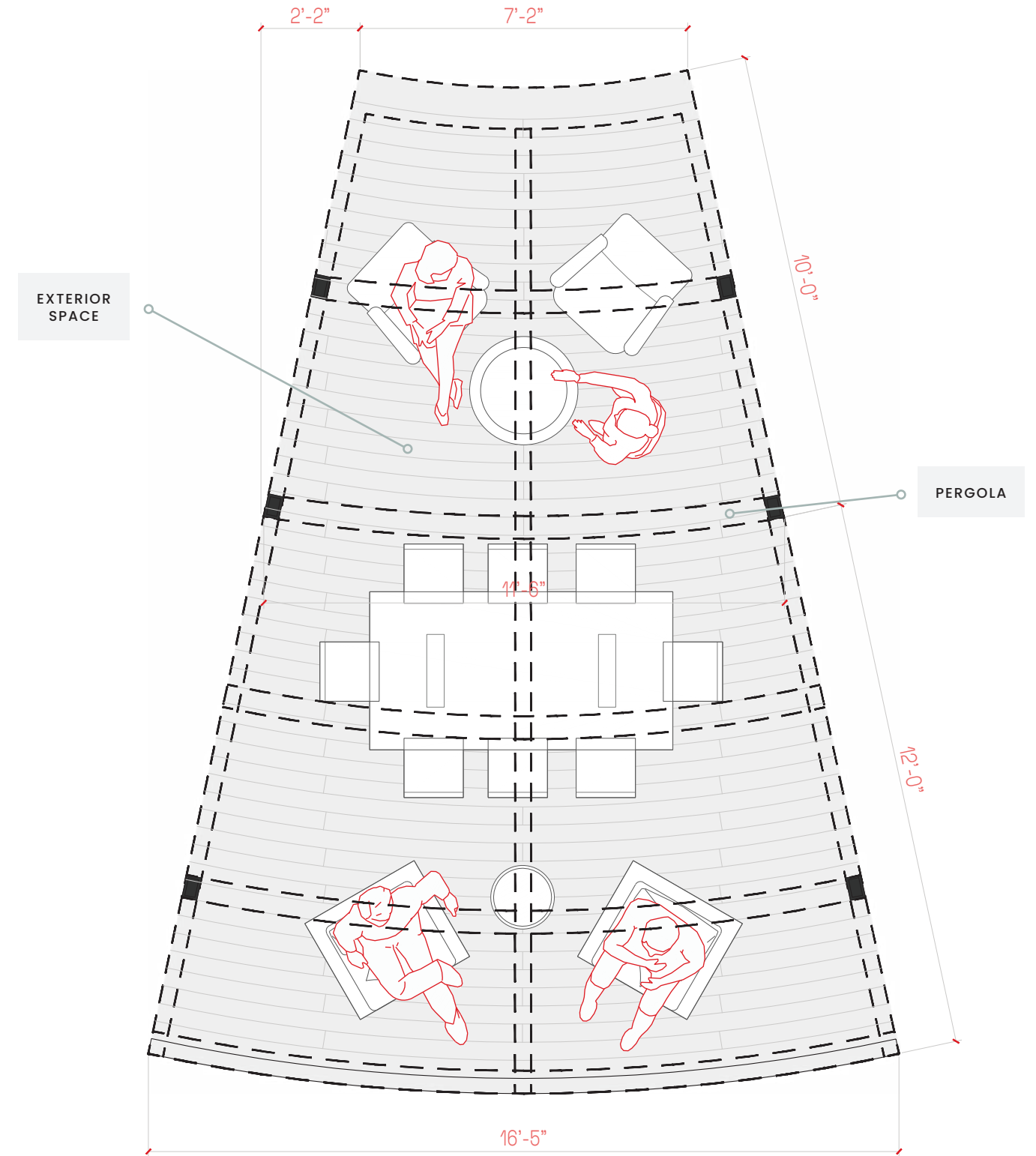
LOOP
Straight Open Bridge Module

Total Built Surface: 253 sq. ft.



LOOP
45° Open Bridge Module

Total Built Surface: 260 sq. ft.



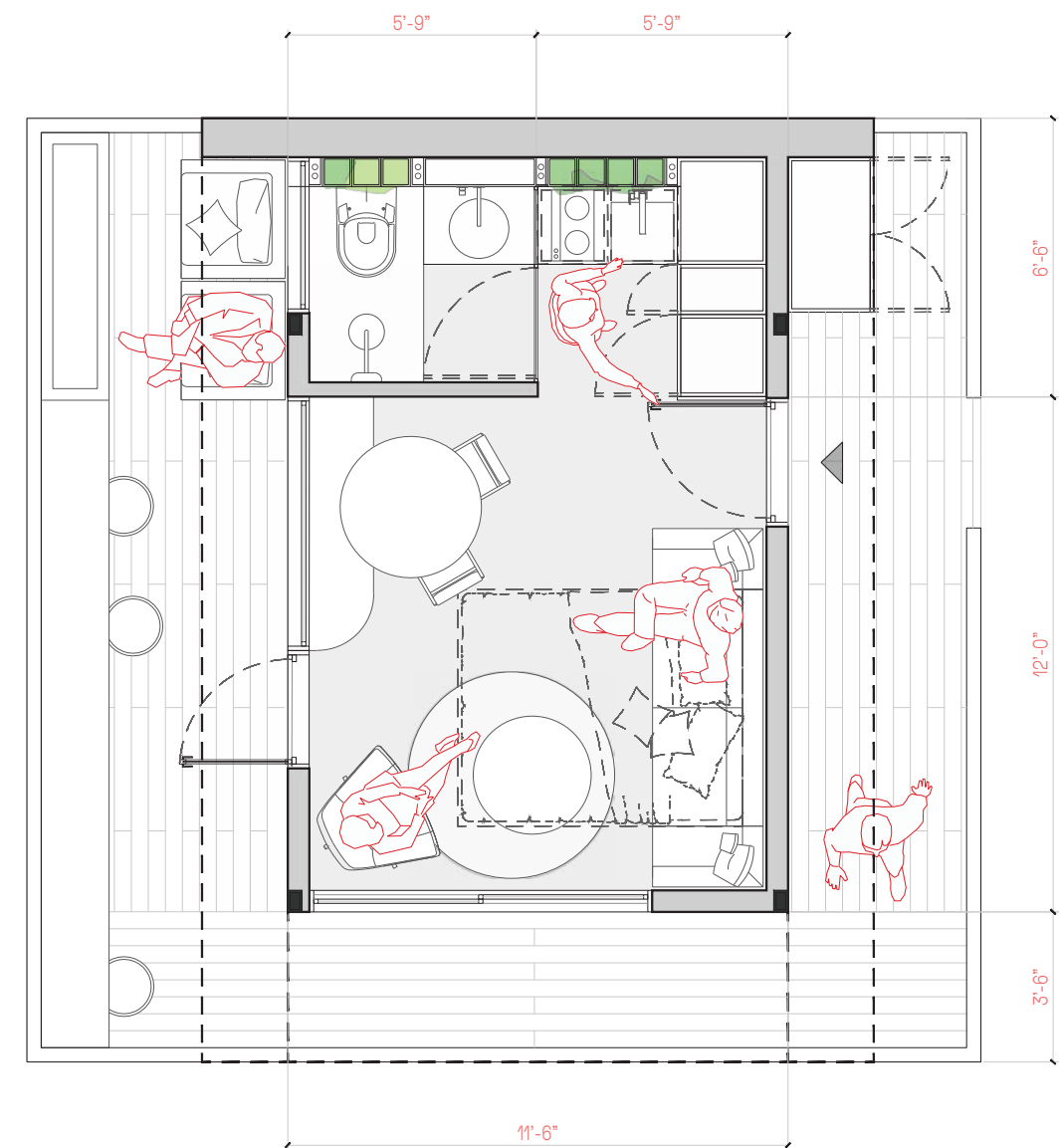
Module Configurations

Loop can be customized into many different layouts.

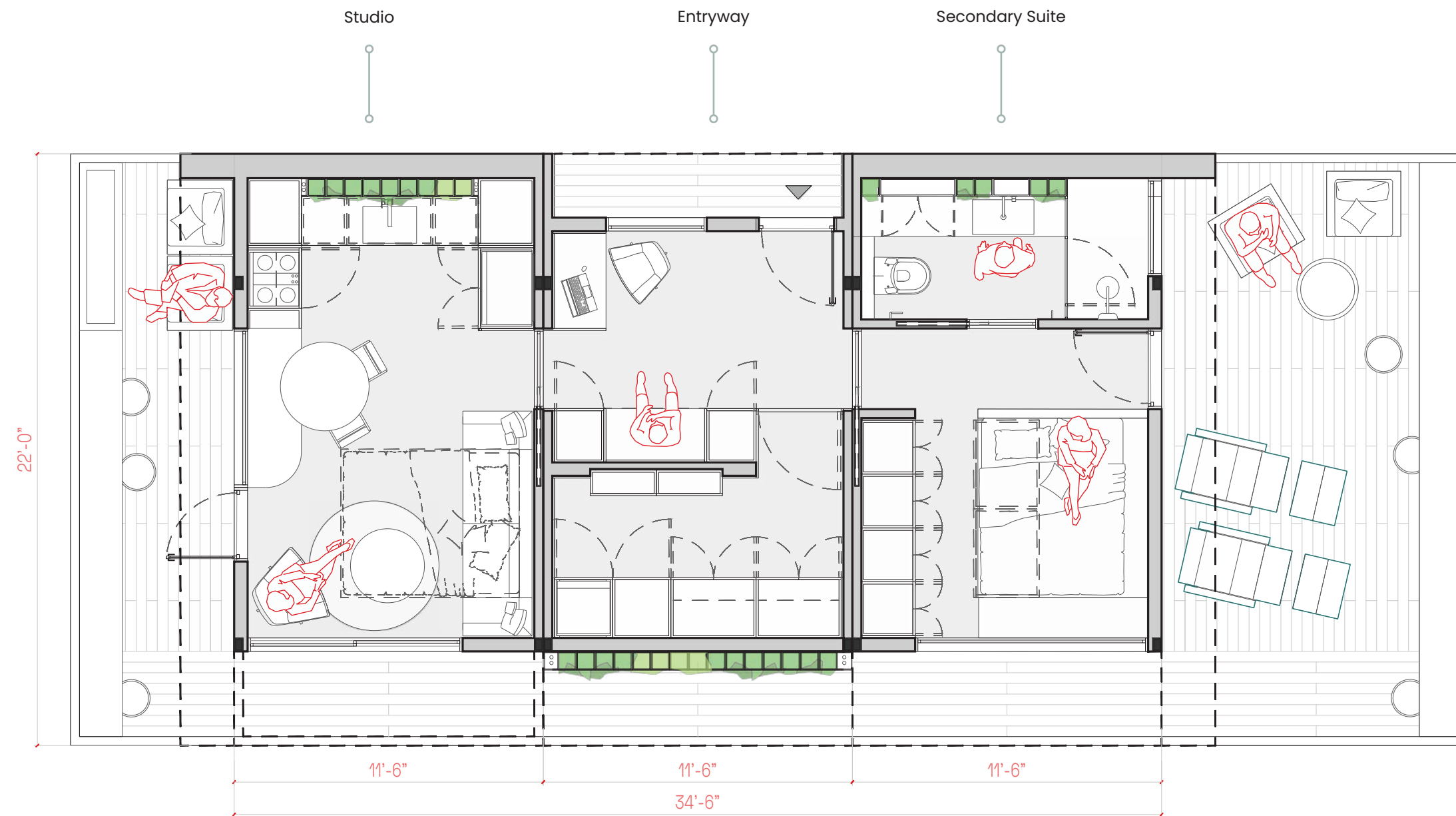
This section details a few popular configurations.



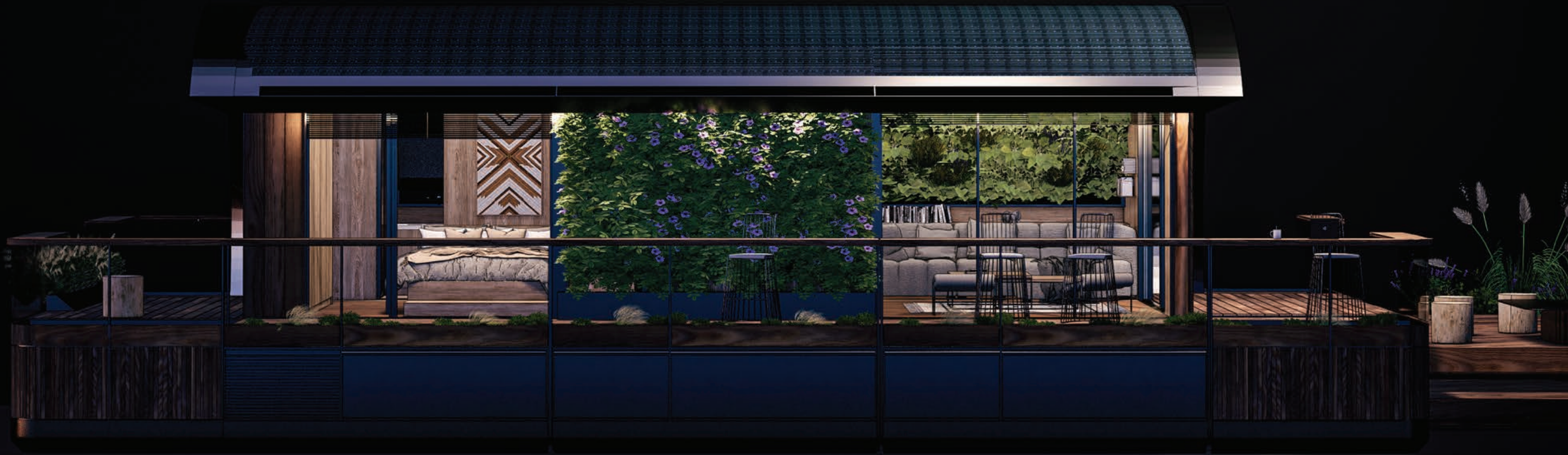
LOOP Studio Module Configuration



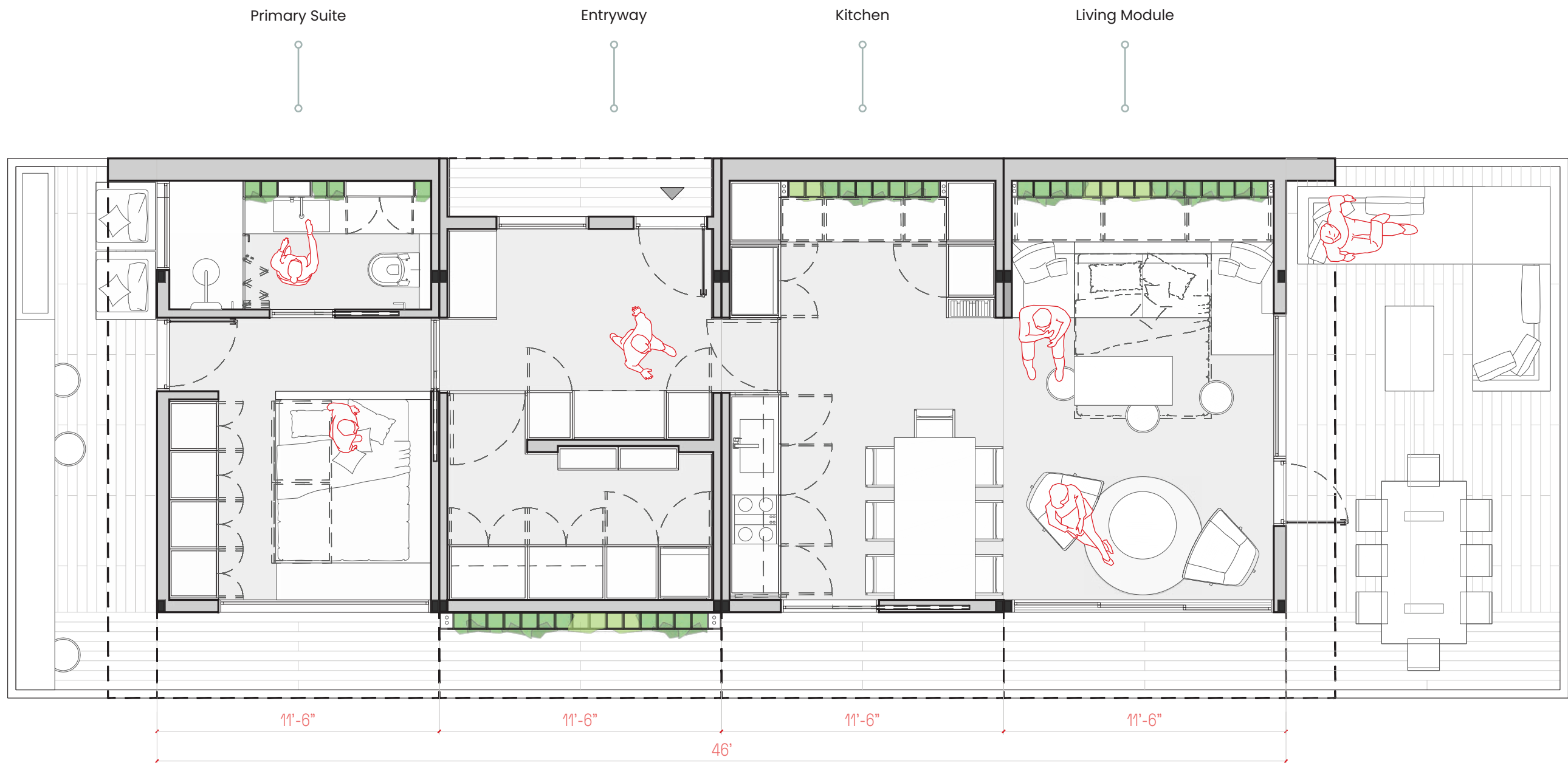
LOOP
Three Module Configuration



LOOP
Three Module Configuration Rendering



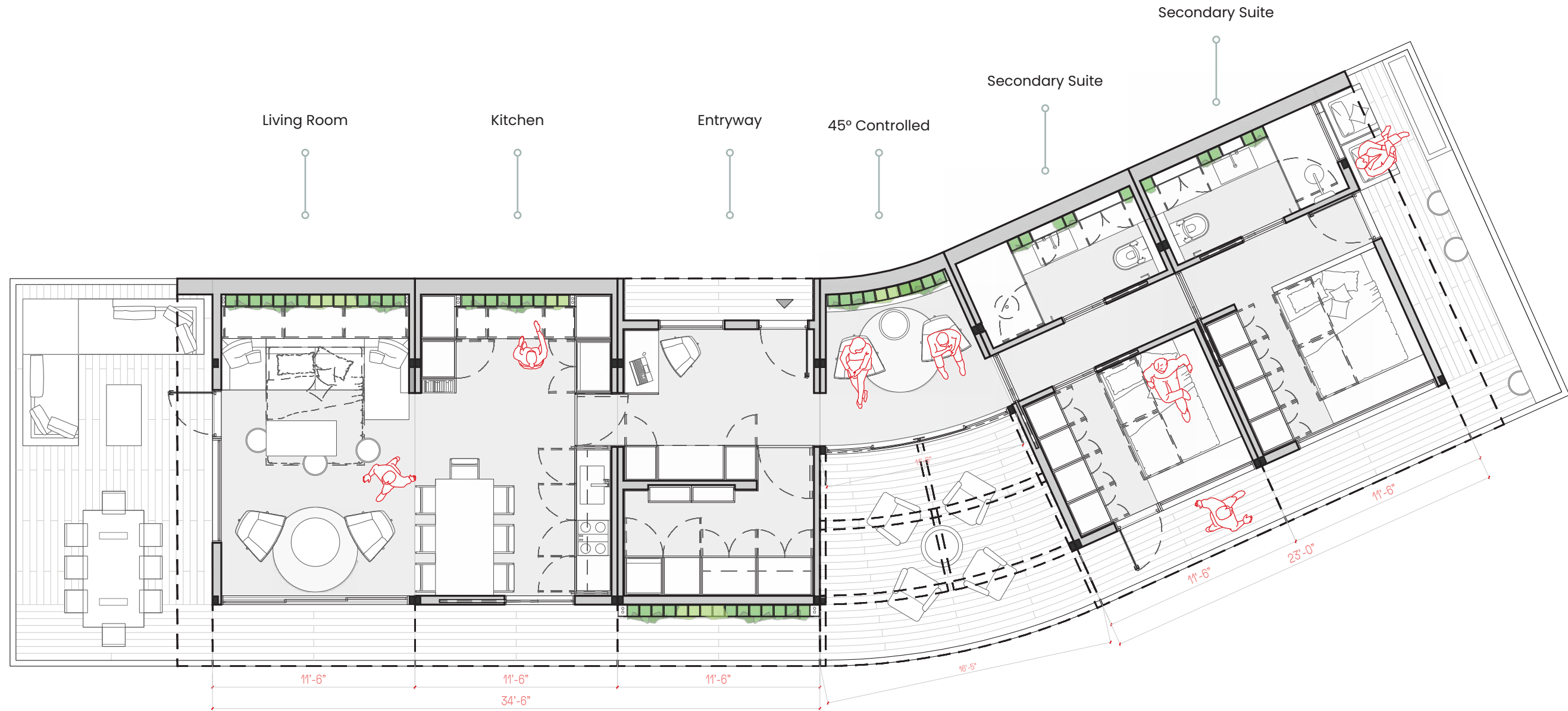
LOOP
Four Module Configuration



LOOP
Four Module Configuration Rendering



LOOP
Five Module + Bridge Configuration



LOOP
Five Module + Bridge Configuration Rendering



Home Systems

LOOP Equipment

REFRIGERATOR

36" Counter-Depth 3-Door Refrigerator

Model: B36CD50SNS

- Width (in): 35 5/8"
- Height (in): 70"
- Weight: 305 lbs
- Color: Easy clean stainless steel
- Silence Level: 40 dBA
- Energy Consumption: 656 kWh/yr
- ENERGY STAR® Qualified
- External water and ice dispenser
- Icemaker

Supplier: Bosch

[Full Spec Sheet Link](#)



OVEN

24" Speed Oven

Model: HMC54151UC

- HxWxD (in): 17 7/8" x 23 7/16" x 22 3/16"
- Weight: 80 lbs
- Max Microwave Power: 1,000 W
- Type of micro-wave oven: MW-Combi
- Watts: 1,920 W
- Frequency: 60 Hz
- Energy Source: Electric

Supplier: Bosch

[Full Spec Sheet Link](#)



COOK TOP

24" Induction Cooktop

Model: NIT5460UC

- HxWxD (in): 1/4" + 3 3/4" x 24" x 20 9/16"
- Weight: 31 lbs.
- Watts: 7,200 W
- Volts: 208-240 V
- Frequency: 60 Hz
- Energy Source: Electric

Supplier: Bosch

[Full Spec Sheet Link](#)



DISHWASHER

24" Recessed Handle Dishwasher

Model: SHEM78ZH5N

- Height (in): 33 7/8"
- Width (in): 23 9/16"
- Silence Level: 42 dBA
- Total annual water consumption: 624 gal.
- Max Temp for Water Intake: 60°C
- Energy Source: Electric

Supplier: Bosch

[Full Spec Sheet Link](#)



WASHER

24" Compact Washer

Model: WAW285HIUC

- HxWxD (in): 33 1/4" x 23 1/2" x 25"
- Weight: 164 lbs
- Water Consumption: 2,379 gal/yr
- Capacity: 2.2 cu. ft.
- Watts: 2,520 W
- Volts: 208/220-240 V
- Noise Level: 50 dBA (washing), 71 dBA (spinning)
- Energy Source: Electric

Supplier: Bosch

[Full Spec Sheet Link](#)



DRYER

24" Compact Heat Pump Dryer

Model: WTW87NHIUC

- HxWxD (in): 33 1/4" x 23 1/2" x 25"
- Dryer type: Condensing
- Drum Volume: 112 L
- Net weight: 125 lbs
- Energy Consumption: 123 kWh/yr
- Watts: 900 W
- Volts: 208/220-240 V
- Energy Source: Electric

Supplier: Bosch

[Full Spec Sheet Link](#)



SMART HUB

Google Nest Hub Max

- Camera: 6.5-megapixel camera with 127-degree wide field of view and auto-framing
- Depth: 3.99 in (101.23 mm)
- Width: 9.85 in (250.1 mm)
- Height: 7.19 in (182.55 mm)
- Display: 10" HD touchscreen (1280x800)
- Connectivity: Wifi and Bluetooth

Supplier: Google

[Full Spec Sheet Link](#)



PROJECTOR SCREEN

Starling 2 Series 100" - Black

Model: ST100UWH2-E24

- Weight: 30 lbs
- Max Screen Size: 100"
- Front Projection
- 16:9 Projection Ratio
- Screen Material: Spectra White FG
- Motorized

Supplier: Elite Screens

*OPTIONAL



PROJECTOR

HDR Laser Home Theater Projector with Native 4K SXR Panel - Black

Model: VPLXW5000ES

- Weight: 28 lbs
- Light Source: Laser
- Resolution: 4K (2160p)
- Color and White Brightness: 2000 lumens
- Contrast Ratio: infinite:1

Supplier: Sony

*OPTIONAL



SOUND SYSTEM

SONOS In-wall Set

- Power: 125 watts per channel at 8 ohms
- Controls: Use the capacitive touch controls on the product to play, pause, skip, replay, adjust the volume, and more.
- Frequency Response: 44Hz - 20KHZ (±3dB)
- Trueplay: This software measures the acoustics of the room then fine-tunes the speaker. Sonos Amp and supported iOS device required.
- Optimized for the Sonos App

Supplier: Sonos



COMPOSTING

Mill Food Recycling

- Dual grinding system effortlessly handles everything from small bones to avocado pits
- Aluminum bucket conducts heat for an ultra-fast dry time
- Food volume is reduced by 80%
- A generous 6.5L capacity allows for processing of around 40lbs of wet food
- Add food anytime, empty after dozens of cycles
- App integration available
- Voltage: 120 VAC/60Hz
- Average power usage: 1 kWh per day

Supplier: Mill



LOOP

Furnishings

BATHROOM SINK

Trough 3019

- Sealed with NativeStone Shield for ultimate protection from stains, scratches and cracks
- Artisan-made from a breakthrough combination of natural jute fiber and cement
- 30-inch sink width allows for installation in smaller bathroom spaces
- Available with single faucet hole or no faucet holes
- State-of-the-art nano sealer binds with the molecules in the concrete
- UPC/cUPC and ADA Compliant

[Full Spec Sheet Link](#)**KITCHEN COUNTERTOPS**

Paperstone - Recycled Paper Countertop

- Durable: Lifetime resistance to stains, water, heat to 350 °F, bacteria and surface cuts
- Non-toxic: formaldehyde and petroleum-free
- Eco-friendly: Made with 100% post-consumer recycled paper
- Naturally warm: not cold like granite or marble
- Made in USA

**KITCHEN SINK**

Native Trails Farmhouse

- Handcrafted from an innovative blend of concrete and jute fiber
- NativeStone® Shield provides better protection from stains, scratches and cracks
- Single basin design provides maximum work space
- Finished on all four sides

[Full Spec Sheet Link](#)**TOWEL BAR**

Brizo Odin

- Constructed of brass ensuring durability and dependability
- Overall Width: 26"

[Full Spec Sheet Link](#)**TISSUE HOLDER**

Brizo Odin Wall Mounted Spring Bar

- Constructed of brass ensuring durability and dependability
- Overall Width: 9" (left to right)

[Full Spec Sheet Link](#)**ROBE HOOK**

Brizo Odin Single

- Constructed of brass ensuring durability and dependability
- Height: 1-3/4"
- Width: 1-5/8"

[Full Spec Sheet Link](#)

LOOP

Plumbing

WATER RECIRCULATION TANK

Hydraloop H300

Save 25% to 45% on tap water with clean, clear, safe, and disinfected reuse water. Increase your property value, lower your water and energy bills, reduce your carbon footprint.

- Volume: 80 gallons
- Cleaning Capacity Per Day: 95 gallons
- Input: Greywater from shower, bath, and washing machine
- Output: Two valves for reusable water to the toilets and the washing machine
- Fully automatic, no filters to replace, no chemicals to add
- Low energy consumption

Supplier: Hydraloop

**PLANT-POWERED WATER TREATMENT AND REUSE**

LeapFrog Estuary

Save water, energy, money, extend your water supply, and beautify your home with this greywater reuse system. On the outside, a modern planter box adds beauty to the landscape with native and ornamental plants; inside, plants and microbes clean greywater from sinks, showers, and washing machines for reuse in toilet flushing and irrigation.

- Dimensions: 48 in x 24 in x 22 in
- Capacity: Each planter module can provide 50 gallons of clean, recycled water per day
- Savings: Over 10 years the average household saves: 350,000 gallons of water, \$12,000 in water costs, and 13 tons of CO2 emissions.
- Materials: The module walls are made of glass-fiber reinforced plastic (GFRP)
- Estimated Power Consumption: ±200 kWh/year
- The Estuary system has been designed and tested to meet the NSF/ANSI 350 standard for residential greywater reuse
- Noise Level: +30 dB

Supplier: LeapFrog Designs

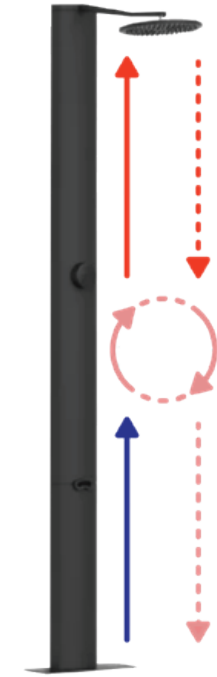
**SHOWER**

Water Recirculating Shower

A traditional 10-minute shower uses 100 litres (26 gallons) of water. Our water recirculating shower uses less than 20 litres (5 gallons) while doubling your water flow.

- Water Flow Rate: Circulating default mode, 0.5 GPM from grid (3 GPM experience at the showerhead). Traditional mode, 1.8GPM.
- In-floor Reservoir: Included with system
- Electrical Supply: GFCI-protected electrical circuit with a waterproof connector within the shower enclosure.
- WiFi 2.4 GHz network (optional)
- Showerhead: Rain shower head, 10 inch wide
- Handheld: Included as an add on feature
- RainStick App: Available for android and IOS, system compatible with Google Home & Alexa
- Cleaning cycle: Automatic

Supplier: Rainstick

**FAUCET ACCESSORIES**

Brizo Faucet Voice IQ

Command your faucet to turn on and off, warm the water, dispense a metered amount or fill custom containers like your coffee pot.

- Allows a Brizo SmartTouch kitchen faucet to respond to voice commands
- Pairs with Amazon® Alexa®- and Google® Assistant-enabled devices

**BATHROOM FAUCET**

Bath Brizo Faucet

- WaterSense Certified product - using at least 30% less water than standard 2.2 GPM faucets, while still meeting strict performance guide lines
- Premier finishing process - metal finishes will resist rust and corrosion through everyday use
- Features SmartTouchPlus™ technology, allowing water activation with a touch or hands-free

[Full Spec Sheet Link](#)



KITCHEN FAUCET

Kitchen Brizo Faucet

- Assembled in the U.S.A.
- Magnetic docking pullout spray head
- Dual function toggle switch
- Spring spout swivels 360 degrees
- SmartTouch® On/Off Functionality
- CA compliant, ADA compliant
- VoicelQ compatible
- Height: 16-1/2" (deck to top of faucet)
- Spout Height: 8-7/8" (deck to spout outlet)

[Full Spec Sheet Link](#)



GRAY WATER STORAGE

Stainless Steel Water Tank

- Resists contamination, mildew, rot and heat
- Custom sized to fit the individual module it is located in



WATER HEATER

Tronic 3000T

- Point-of-Use Electric Mini-Tank Water Heaters
- Compact, lightweight, space-saving

Supplier: Bosch

[Full Spec Sheet Link](#)



FRESH WATER STORAGE

Stainless Steel Water Tank

- Resists contamination, mildew, rot and heat
- Custom sized to fit the individual module it is located in



TOILET

Cinderella Incinerator Toilet

- Capacity: 4 visits per hour
- Ventilation duct / pipes: 110 mm (external)
- Incineration power: 2000 W
- Energy consumption per incineration: 1-2 kWh
- Power requirement: 220 - 240 V, 10A
- Max weight tolerance: up to 200 kg

Supplier: Cinderella Incinerator Toilets

[Full Spec Sheet Link](#)



LOOP

Heating, Ventilating and Air-Conditioning (HVAC)

CLIMATE CONTROL

Climate 5000 Ductless Mini-Split Heat Pump

- Multi-part air filter system cleans air, reduces potential allergens and odors
- Single and Multi Zone configurations for maximum indoor comfort
- 100% heating capacity between -5°F and 5°F, depending on system configuration
- No additional accessory needed for Low Ambient Cooling operation down to -22°F with MAX Performance System (Maximum 107% Cooling capacity at -22°F)
- Whisper quiet operation: ODU as low as 53 dB, IDU as low as 23 dB(2)
- Factory installed base pan heater for all ODU models
- Built in condensate (lift) pump

Supplier: Bosch



LOOP

Electrical Generation and Storage

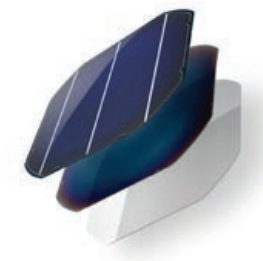
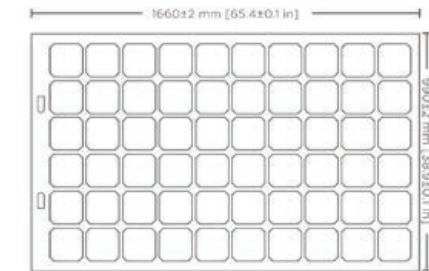
SOLAR PANELS

Sunflare Solar Flex60 Flexible PV Panels

- Peak Power (+5/-0%): 185W
- Temperature Coefficient for Power: -0.35 %/°C
- Snow Down-Force Load: 125 lbs./sqft
- Wind Up-Force Load: 113 lbs./sqft
- Thin, lightweight, flexible and durable
- Sunflare solar panels weigh just 11 pounds. These modules are 86% lighter than silicon
- UL, IEC, CEC Listed. Class A fire rated

Supplier: Sunflare

[Full Spec Sheet Link](#)



ELECTRICAL PANEL

Span Smart Panel

Unlike a traditional electrical panel, SPAN Panel gives you circuit-level control and provides actionable insights into how energy is being used in your home. With the SPAN Home app, you get real-time insight into which circuits and appliances are consuming the most energy, as well as the ability to shut off any circuit in the home at a moment's notice—even when you're away.

- Real-time on/off control over every circuit in the home from the SPAN app + scheduling.
- Circuit-level energy usage visibility empowers you to make smarter decisions to save on your utility bill.
- Future-proof your home for upgrades such as EV, solar, battery storage, heat pumps, induction cooktops, and more.
- 360-degree view of your home's energy from a smartphone or tablet helps you save more.

Supplier: Span



POWERWALL

Tesla Powerwall 3

Powerwall is a compact home battery that stores energy. You can use this energy to power the devices and appliances in your home day and night, during outages or when you want to go off-grid. With customizable power modes, you can optimize your stored energy for outage protection, electricity bill savings and more.

- Energy Capacity: 13.5 kWh
- On-Grid Power: 11.5 kW continuous
- Backup Power: 11.5 kW continuous, 185 LRA motor start, Seamless backup transition
- Inverter: Solar-to-grid efficiency 97.5%, 6 solar inputs with Maximum Power Point Trackers
- Size (L x W x D): 43.25 x 24 x 7.6 in
- Weight: 287 lbs
- Integrated inverter and system controller -4°F to 122°F, Flood and dust resistance

Supplier: Tesla





Design Your Loop

Customization Options

Add or subtract features and warranty.

Facade Color

Natural Red Oak, Thermally-treated..... Included
 Charred Red Oak, Thermally-treated..... + Added Cost

Window Shading

Window-Integrated Smart Blinds..... Included

Deck Configuration

3 foot wrap-around deck on 3-sides of Loop..... Included

Off-Grid Battery Storage

51 kWh..... Included
 25 kWh..... - Subtract Cost
 15 kWh..... - Subtract Cost

Emergency Power System

In-line multi-fuel generator..... + Added Cost

Plumbing Package

Off-Grid..... Included

- On-board blackwater collection tank
- Greywater recycling system
- Potable water storage
- Recirculating shower

Entertainment System

Built-in High-Fidelity AV including..... + Added Cost

- 100" retractable projector screen
- Laser Projector

Warranty & Maintenance Plans (Conditions Apply)

1-year base warranty and free systems maintenance..... + Added Cost

Pricing and customization options are subject to change. Inquire for pricing beyond Included costs.



Bedroom Rendering

Before You Order

You are so close to being able to order your home. Here are the final steps to complete before your dream of living in a Loop can be reality.

STEP ONE

Purchasing Land for your Loop

1. If you haven't found the perfect land yet for your Loop home, this is where you need start.

Do you want your place to be on the water? In the woods? To have a view? This is your chance to wake up to the setting of your dreams.

2. When picking land for your Loop, it's crucial to consider how accessible and build friendly this area is.

For example:

- Will it be possible to crane in a loop home?
- Will you be able to pour footings?
- What energy connections and other utilities will be used for the project? Will your home be Grid-tied + Solar, Grid-only, or completely Off-Grid?

3. Consider Zoning and Deeds

Is it legal to build a loop home on your land? When placing a loop home, you'll need to find a piece of land zoned for residential use. It's usually safe to look for zoning for SFR, or Single Family Residences.

Deeds are also very important to consider. If you plan to place multiple Loop homes on piece of land, you need to be aware of how many structures your land is deeded for.

STEP TWO

Determining the Size of Your Home

1. How are you going to be utilizing your Loop home?

Will it be your primary residence or a second home? How many bedrooms and bathrooms will you need? It's helpful to think about how you plan to use this space now, and what you plan to do with the property in the future. Does your land have the space to add additional modules if you'd like too?

2. Am I respecting the integrity of the land?

What sort of home makes sense for your piece of land? Does Loop tie into the current surroundings? How intrusive is the land work that needs to be done? A smaller home isn't always what is right, but it's important to think about the impact this residence will have on the area.

3. What shape of residential footprint are you interested in?

Our homes can currently be configured to be straight, square, or round.

STEP THREE

Permitting | Determining Who Needs to Approve Building Plans

Typically home plans need to be approved by your Town and your HOA (if you belong to one)

1. The Town for Permitting

When buying a Loop Home, you'll have to get appropriate permits before you can place the home on your land. There is an application and submission requirements you'll need to submit. These applications generally require documents like site plans, building plans, and electrical, plumbing and mechanical details.

Make sure to check your county building codes for the following:

- Waste water system regulations
- Greywater system regulations
- Incineration toilet regulations
- Composting toilet regulations
- Water collection system regulations

2. Your Local HOA

If you live in a neighborhood, you may have to approve your Loop build plans with your local Home Owners Association. Depending on your HOA, specific building materials, colors used and home size requirements may have to be followed.

STEP FOUR

Financing

1. Use issho Financing

At issho, we offer financing options for our Loop Homes and Revive systems.

2. Find Outside Financing

If you have a preferred lender, you are more than welcome to use them for financing. Keep in mind that outside lenders will need to approve the Loop plans before financing can be granted.

Order Your Loop

Congratulations on the beginning of your regenerative living journey with us!

We are so excited that you have discovered Loop, and we look forward to co-creating with you!

Now that you have been introduced to the amazing possibilities of Loop, we would like to provide you with more information to help you with next steps.

STEP ONE

Email our Customer Journey Lead

Email Ambrosia Ballew, at ambrosia@issho.house, with a request stating your further interest in Loop.

STEP TWO

Complete New Client Loop Request Form

Ambrosia will send you a New Client Loop Request Form.

This form will lead you through a series of questions, which will help us better understand your vision. Once you complete and send this form back to Ambrosia, you will then be sent a calendar link to book a Discovery call.

STEP THREE

Schedule a Discovery Call

Once your New Client Request Form is completed, we will coordinate a Discovery call to review the information from your completed form.

In this call we will answer any additional questions, and discuss the specific action steps needed in order to move forward with us.

We are so excited for you, as you embark on this journey of empowering yourself to live more consciously!

Delivery and Installation

1. Property Visit

issho will inspect your property to make sure Loop is a good fit for your location. This process typically happens remotely and can take 1-3 days to complete.

2. Permitting***

issho will connect with your local permitting office to handle your paperwork so you can start planning your new regenerative lifestyle. Depending where you live, this process can take anywhere from a single day to several months.

3. Off-Site Construction

issho's professional construction team gets to work building your new Loop home in Colorado, USA. At this time, construction is expected to take up to 9 months, depending on how many Loop homes are in the queue.

4. Site-Prep***

Depending on whether your Loop will be off-grid or grid-tied, and what is permissible in your municipality, issho will schedule a crew to set footings or pour a foundation and, if applicable, schedule utility hookups for your Loop. This generally takes one to three weeks, and occurs at the same time as off-site construction, speeding up your project timeline.

5. Delivery***

Your Loop arrives by flatbed truck and is craned into place. It's an easy (and impressive) process—invite your neighbors to watch.

6. Move-In

Your Loop will be move-in ready within 1-3 weeks of being delivered and installed on site. issho will provide an owner's manual kit and other opportunities for you to learn more about your Loop at least 30 days prior to your delivery. We're also partnered with amazing companies who can provide you with sustainable furniture, linens, home cleaning supplies, and more if you'd like to move into a fully-equipped home. Please let us know how we can help.

***Indicates Added Cost